



MOBILE MUSEUM OF ART

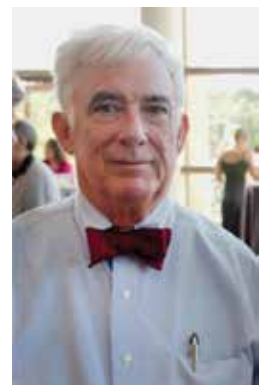
ANNUAL REPORT

2018 - 2019



TABLE OF CONTENTS

FROM THE DIRECTOR	2
FROM THE CHAIRMAN OF THE BOARD	2
WHAT WE DO	
ART	3
THE MUSEUM SCHOOL	8
HOW WE DO IT	
COMMUNITY SUPPORT	10
DONOR CIRCLE	11
VOLUNTEERS	12
STAFF	13
FINANCIAL POSITION	14
HOW ARE WE DOING?	
BY THE NUMBERS	15
WHY WE DO IT	
MISSION	16



We dedicate this report to the memory of architect and museum supporter Nicholas Hanson Holmes III (1952-2019)

FROM THE DIRECTOR

This year's Annual Report reflects so much progress for Mobile's art museum, and that progress is the result of the strength and cultural savvy of our community. We love our community, and we hope that has been apparent over the course of the past year.

I could not be more proud of our Museum's volunteers, Board, and professional staff in their work over the past year! One year ago, we formulated a 5-year plan that included priorities for the next five years, resulting from a series of community surveys and interviews about how people felt about their art museum. We came up with 5 areas of focus for the next five years: 1) The Art Collection (clarifying, cleaning, collection care, research); 2) more kid and family friendly programming; 3) the art of our times; 4) the art of our place (Southern, regional); and 5) achieving a successful reaccreditation with the American Alliance of Museums (AAM) in the year 2022. We have made great progress in achieving each of these, and we are making every effort to share our sense of celebration of the arts in the process. In the past year, our programming has reflected these priorities.

Objects in our collection are being conserved, researched, and displayed—often for the first time. Over the past year, we presented several exhibitions by living artists working in a wide variety of mediums: Michael Olszewski of Chicago; Monica Beasley of Mobile; Stephen Althouse of Pennsylvania and Florida; Chris Nitsche of Savannah. Those contemporary exhibitions were followed by several solo exhibitions of southern masters, reflecting both the art of our times and place—including Casey Downing, Bruce Larsen, and Nall; with additional installations of two deceased artists, Lee Hoffman and Fred Marchman.

We were especially proud to have contributed our museum's first exhibition designed specifically for children and families, which was a true community effort. FOR CHILDREN: The Elements of Art & Design, opened with great fanfare on December 15, 2018 with a crazy-fun, hilarious festival for children. This exhibition was one of our most popular and well-visited projects throughout the past year (so much so that we are creating a new iteration of it for 2020).

Over the past year, we have continued our efforts to expand "accessibility" through our continuing, privately-funded Pop Up Museum for Mobile (downtown Mobile storefront); Government Plaza Gallery (featuring work by area artists); and our collection installations at Mobile's airport.

We believe Mobile is "the best"—and deserves the best in high quality art exhibitions, dynamic programs, classes, and community events. THANK YOU for a great year!



Deborah Velders
Director



Sheri Weber
2019 Chairman of
the Board

FROM THE CHAIRMAN OF THE BOARD

2019 was an active and productive year for the Mobile Museum of Art. Together, the volunteer Board of Directors, alongside the knowledgeable Executive Director Deborah Velders, continued to support the Museum's mission and goals.

Highlights from this year include: the Museum's continued presence off-site at the Pop-Up Museum and at Government Plaza, the first (and very successful) FOR CHILDREN: The Elements of Art & Design exhibition, opening the ALL AMERICAN exhibition, Southern Pop, Southern Masters and Mentors exhibitions, and a first-ever members' trip to Crystal Bridges Museum of American Art in Bentonville, Arkansas. These highlights, in addition to all the excellent programs and exhibitions, focus on family-friendly programs, the art of our times (living artists), and the art of our place (Southern, regional).

The Mobile Museum of Art will continue to strive to meet its potential by fulfilling its mission: "educating, engaging, and enriching through the arts."

WHAT WE DO

ART

COLLECTION

ALL AMERICAN: From the Collection

November 6, 2018 - Ongoing

This installation of American work from the Museum's permanent collection is organized by medium or theme to better demonstrate the innovative use of materials and mediums by American artists, designers and craftsmen throughout history. Works date from the 18th century to the present day, and are organized chronologically to illustrate changing social attitudes and artistic practices through time. The installations include works by notable figures in the history of art and design, as well as lesser known artists

SPECIAL EXHIBITIONS

JANE CASSIDY: The Undersea Well

October 5, 2018 - April 7, 2019

This site-specific, audio-visual installation by Irish artist, Jane Cassidy, was organized by The Montgomery Museum of Fine Arts in Montgomery, Alabama. By manipulating various technologies such as speakers and projectors, Cassidy fuses light and sound to form an immersive, meditative environment filled with visual music.

MICHAEL OLZEWSKI: Meaning & Light

October 5, 2018 - May 19, 2019

Through his fiber constructions, artist Michael Olszewski strives to visually recreate the essence of feelings and emotions that co-exist between conflicting aspects of consciousness, relationships with others and transitional life crises. Olszewski has received fellowships from the National Endowment for the Arts, The PEW Charitable Trusts, the Pennsylvania Council on the Arts, the Polish Ministry of Culture, and The Ballinglen Arts Foundation.

STEPHEN ALTHOUSE: Metanoia

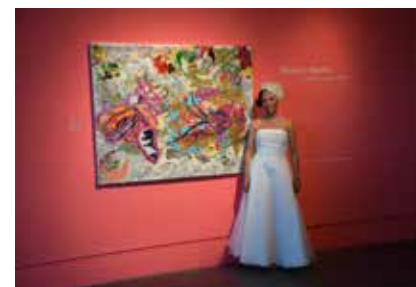
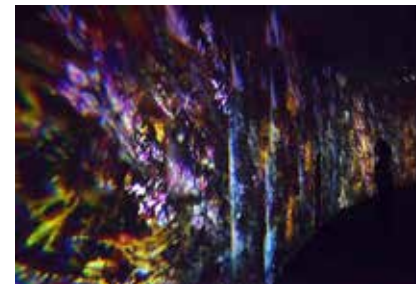
October 5, 2018 - June 2, 2019

Inspired by his love of tools and farming equipment, Stephen Althouse started as a sculptor of wood, leather, and forged metal, but later transitioned to photography, using the tools and artifacts themselves to create large scale photographs with a unique pictorial dialect. The relics that Althouse chose in this exhibition remind him of the "paradoxes of our species, and some imply the valor of individuals facing lives of relentless uncertainty."

MONICA J. BEASLEY: Feminism & Magical Thinking

October 5, 2018 - July 14, 2019

Throughout her career as an artist, Mobile, AL, native Monica Beasley has explored concepts of feminism, femininity, home, marriage, family, race, and Southern culture. Monica works in many mediums from photography and conceptual work to painting and collage. Teacher, friend, and well-known painter Ed Paschke, as well as artists Ellen Gallagher and Kerry James Marshall have also had tremendous influence on her life and work. In speaking about Paschke's impact in particular, Monica notes, "He opened my eyes to everything already in the universe. You just have to go look for it, to rethink it, repurpose it, and let it shine in a different way."





FOR CHILDREN: The Elements of Art & Design

December 15, 2018 - ongoing

FOR CHILDREN: The Elements of Art is the first exhibition organized by the Mobile Museum of Art specifically designed for kids! The exhibition presents a maze of galleries for children to experience immersive, creative, and wacky visual environments. It is designed for fun, yet teaches kids the basic elements of creative art and design (Line, Texture, Color, Scale, and Shape), as well as relationships between science and art. The exhibition includes hands-on experiences and photo opportunities for parents and grandparents!



CHRISTOPHER NITSCHKE: Liminal Ship II

December 15, 2018 - March 15, 2020

Christopher Nitsche creates sculptures, drawings and temporary installations that evoke the visual and metaphorical attributes of ships; a pursuit he started in 1995. This installation continues a series of site works exploring the ship as a carrier of memory objects. The hull-side is composed of re-purposed lumber, which has an extant history of previous use. Most of the wood comes from debris after Hurricanes Mathew and Irma.



BOB H. MILLER: Reflectorama

December 15, 2018 - March 15, 2020

Bob Miller's *REFLECTORAMA* installation at the Mobile Museum of Art surrounds viewers with the artist's reflective artworks, viewable only with a flashlight, demonstrating the work's powerful and creative use of light, optics, color and design. Bob H. Miller has always had an intense interest in science and technology and their application in image making. His reflective collages are tediously made of hand-cut pieces of "Scotchlite" reflective sheeting applied to panels. Scotchlite was designed to reflect light from automobile headlights and is commercially used for street signs and on emergency vehicles for night visibility and safety. Miller has repurposed this industrial product to create a unique visual and aesthetic viewing experience.



URBAN WILD: Folk & Street Art of the South

May 10, 2019 - January 12, 2020

This exhibition of three site-specific murals are presented as a satellite installation of *URBAN WILD: Folk and Street Art in the South*, an exhibition at Alabama Contemporary Art Center, curated by Elizabet Elliott. *URBAN WILD* examines the range of creativity that is practiced throughout the streets, highways, and dirt roads of the South.



SOUTHERN MASTERS: Casey Downing Jr., Bruce Larsen, & Nail

July 12, 2019 – January 5, 2020

We invited three unique and larger-than-life artists from Alabama to step outside the box and create major installations that represent the history of their work, as well as their creative processes. This exhibition is a rare glimpse into their worlds, their distinct perspectives and unique styles. All three of these artists have worked tirelessly over the years and with great passion. Each is a true master.



FREDERICK A. MARCHMAN: Southern Pop

July 12, 2019 – November 17, 2019

Fred Marchman (1941-2016) was a Mobile and Southern original. Everyone who knew him said he was born an artist – obsessed, determined, prolific and creative. He called himself a Southern Pop artist and said he was influenced by ancient art, modern painting and sculpture, folk art, esoteric writings, visionary and spiritual themes. He was a painter, printmaker, sculptor, and illustrator who reveled in using paint, wood, canvas, ink, metal, charcoal, crayons, and even concrete, to make his art. As for subject matter, he found inspiration in televisions, machines, the Confederacy, belles, flowers, kudzu, 50's automobiles, duck decoys, and the female nude. He admired the work of artists H.C. Westermann, Paul Klee, Arshile Gorky and David Smith.



LEE M. HOFFMAN: A Legacy

July 12, 2019 – January 5, 2020

Lee Hoffman exhibited nationally and was a beloved painter and art personality of the Mobile area along with his wife and fellow artist, Kaye Wall Hoffman. This exhibition shows the diverse and ever changing talents of Hoffman's career from 1960 until his passing in 2010.

OFFSITE EXHIBITIONS

Government Plaza Gallery

June 26, 2018 – present

Following the success of the first iteration of our Government Plaza Gallery, MMofA organized two more installations. This is an opportunity for Mobile area artists to exhibit their work in a special exhibition for the public lobby/atrium at Government Plaza. Both a curated and juried exhibition take place twice a year. Dozens of artists from our community submitted work in virtually every medium: oil and watercolor painting, charcoal and pastel drawings, papier mache, ceramics, glass and metal. These exhibitions were curated by Stan Hackney of the Mobile Museum of Art, and conceived and sponsored by Connie Hudson and the Mobile County Commission.



Mobile Museum of Art also continued our Pop-Up Museum at 300 Dauphin Street, and our partnership with the Mobile Regional Airport, both cited in MMofA's 2016-17 annual report.

RESEARCH & PUBLICATIONS

Collection Research & MMofA's Resource Library

This fiscal year we continued the inventory of the permanent collection, resulting in the deaccessioning of approximately 4,000 works because they were a) not what they were purported to be; b) in such poor condition that the cost of conservation outweighed value; c) did not contribute to the museum's mission; d) were not museum quality; or d) were duplicative.

Disposition of the deaccessioned works included a) sales at various auction houses; b) consignment at appropriate venues; c) donations to nonprofit organizations; d) transferal to more appropriate museums or schools; and e) documented destruction of forgeries and works beyond repair.

We continued to document and research the remaining items in the collection and entered data into the museum's software program.

Dr. Khristina Van Dyke examined our African collection and made recommendations about deaccessioning. Howard Sutcliffe, of River Region Costume and Textile Conservation, examined our textile collection and was hired to conserve several quilts.

We submitted several other works to conservators for remediation, including an early Christian clay Tanagra figure and a Chinese import porcelain bowl.

We submitted works thought to be by John Frederick Kensett and Pierre Auguste Renoir to catalogue raisonne committees, with negative results. We also could not verify that a painting given to us as by Maurice Utrillo was authentic, based on a search of that catalogue raisonne. A signed Tiffany vase was determined to be a forgery.

All funds raised through sales of works were used to pay for conservation and care of the remaining collection.



Howard Sutcliffe, textile conservator with River Region Textile & Costume Conservation examines a quilt from the MMofA collection.

GIFTS & ACQUISITIONS

Gift from the Estate of Alain Gerard Clement (9 gifts)

Alain Gerard Clement
 American, French born, 1945 – 2018
 SEA GODS
 n.d.
 Silver chloride photogenic drawing on paper



Alain Gerard Clement
 American, French born, 1945 – 2018
 WAR SERIES, UNTITLED #4
 2001-2003
 Silver chloride photogenic drawing on paper



Alain Gerard Clement
 American, French born, 1945 – 2018
 WAR SERIES, UNTITLED #11
 2001-2003
 Silver chloride photogenic drawing on paper

Gifts of Deborah Velders (3 gifts)



Hiroshi Sueyoshi
 Japanese, born 1946
 UNTITLED
 n.d.
 Glazed ceramic



Michael Olszewski
 American, born 1950
 STRIATIONS #17
 2001
 Watercolor on paper

Gift of Doug and Marsha Bierly (1 gift)



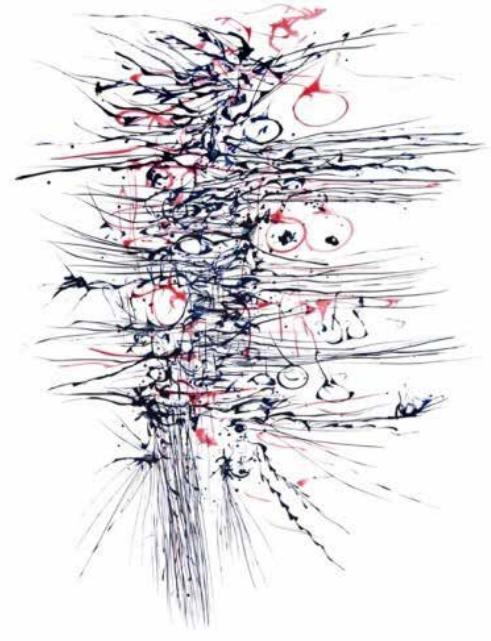
Stephen Althouse
 American, born 1948
 RUSTED CROWN
 2013
 Pigment print on paper

GIFTS & ACQUISITIONS (continued)

Gifts of James (Jim) G. Kralik (2 gifts)



William Christenberry
American, 1936 – 2016
UNTITLED (July 20)
2005
Ink on paper



William Christenberry
American, 1936 – 2016
UNTITLED (July 18)
2005
German ink on paper

Gift from The Center for Art in Wood (34 gifts)



Mark Bishop
Australian, born England, 1965
Split Sphere I
1997
Wood, bleach, and dye

Terry Martin
Australian, born 1947
Leafy Cyclops
1998
Pink ivory



Gifts of Damaris Anderson (1 gift)



Unknown Artist
THE GARRISON SISTERS (Margaret Charlotte Garrison,
1842-1859 and Mary Louisa Garrison, 1851-1859)
1858
Oil on linen

THE MUSEUM SCHOOL

YOUTH

The Museum School offers several programs for students in grades K-12: school tours, Home School Art School, Spring Break Art Camp and Art Blast! Summer Camp. In addition, teacher workshops and faculty department meetings offer opportunities for educators in all subject areas to learn how to include art in their curricula. A wide variety of tours and classes for students are curricula-based and follow Alabama state curricula standards. Hands-on projects reinforce the elements and principles of art through regularly scheduled gallery tours, art appreciation and art history. This year, the Museum School's Home School Art School was chosen one of 200 schools in the state of Alabama as an official Bicentennial School based on a program implemented by the faculty called 'Recycled and Upcycled Mobile'. Students discussed the importance of recycling while learning about prominent artists who have created art from found materials, as well as creating their own original artworks.

OUTREACH

Outreach is for all of the Mobile community. We believe our museum's mission extends beyond the walls of our building and out into the community. Everything from discovering self-identity with young children and adolescents to emotional and physical healing for the elderly, veterans and anyone experiencing personal struggle, art can enhance and enrich our lives. The Mobile Museum of Art's outreach program places trained professional artists and resources in underserved areas of the community with the goal to provide a consistent high quality art experience to everyone.

SALVATION ARMY FAMILY HAVEN

MMofA, with the help of our generous donors and sponsors, has implemented bi-monthly art activities led by working artists at the Salvation Army's Family Haven, a housing facility for homeless families. Art activities at the Family Haven are designed to engage every family member, offering them time to engage with each other creatively in a stress-free environment using various media including paint, clay, printmaking, and costume-making.

BOY SCOUTS OF AMERICA AND GIRL SCOUTS OF THE USA

The Education Department has added Girl Scout and Boy Scout tours to its opportunities for young people in scouting to earn their merit badges in art. Most popular has been the ceramic tour, with its accompanying hand-building pottery studio art class. All clay creations are glazed by the students and then fired in our kiln for pick-up at a later date. Other areas are watercolors, pencil, oil pastels, tempera and acrylics. All Scout programs include a themed gallery tour and hands-on art activity with art history and art appreciation included in the lesson.

MEMORY CAFE

MMofA partnered with the Area Agency on Aging to create quarterly 'Memory Cafes,' a welcome place for individuals with Alzheimer's or dementia to create art, music and socialize. Countless studies have confirmed the value of non-verbal communication and creative play for those suffering from memory loss or cognitive impairment. Through visual stimuli, music and hands-on activities participants are given a unique experience that meets them where they are.





ADULT CLASSES

We at Mobile Museum of Art believe that learning doesn't stop after childhood. The Museum School provides a robust offering of artistic opportunities for both adults and older teens. Classes and workshops include Throwing on the Pottery Wheel, Life Drawing, Painting, Silversmithing Jewelry, Indigo Dyeing and Shibori, Glass Fusing, and courses on art history and appreciation, among others. With beautiful, natural surroundings in Langan Park and galleries full of our permanent collection as well as changing exhibitions, there is no shortage of inspiration. Classes are scheduled year-round including night and weekend offerings.

PROGRAMS

In the 2019 fiscal year, Mobile Museum of Art focused on creating more quality and diverse programs. First, we featured artist talks and performances, which give artists a chance to speak about themselves, their work, and what inspires them. We also launched a quarterly event with Powerline Poets, a local poetry group who performs the art of the spoken word and hosts an open mic in the Larkins Auditorium. MMofA also hosted the first annual Mobile Animation Film Festival, a partnership with the Animation Department at the University of South Alabama to present the best of student, national, and international animation to the community. We also continued our partnership with the Mobile Jewish Film Festival in 2019. Through a total of 28 programs, we served 2,348 people and provided professional growth opportunities for 137 artists.

HOW WE DO IT

COMMUNITY SUPPORT



MMofA is supported by a unique public/private partnership of government entities and community support. Since its founding in 1964, the art museum has evolved into the only accredited art museum in South Alabama, with a collection of over 6,000 artworks comprised of painting, sculpture, decorative arts, works on paper, and crafts.

With the generous support of the City of Mobile, our State Arts Council, Donor Circle, foundations, corporations, membership, and visits by the general public, MMofA has had a transformative year. THANK YOU!

IN-KIND SUPPORT

Alec Naman Catering, Inc.
H. Don Bowden Architect, P.C.
Star Design Graphics

PRIVATE FOUNDATION GRANTS

A.S. Mitchell Foundation
The Ben May Charitable Trust
The Betty McGowin Charitable Trust
The C.D., Helen and Jeff Glaze Foundation
The Caring Foundation at Blue Cross and Blue Shield of Alabama
The Community Foundation of South Alabama
The Crampton Trust, established by Katharine Crampton Cochrane
The HoustonVegas Charitable Fund
The J. L. Bedsole Foundation

The Lillian C. McGowin Foundation
The Lisa Mitchell Charitable Foundation
The Lott/Samford Family Charitable Foundation
The Mayer & Arlene Mitchell & Abraham Mitchell Fund
The Miller Charitable Foundation, Inc.
The Nan H. Altmayer Charitable Trust

GOVERNMENT GRANTS

Alabama State Council on the Arts
City of Mobile
Mobile County, Alabama

PICTURED BELOW: Left - City Councilman Joel Daves with State officials; Top Middle - City Councilman John Williams with Airbus Engineering Mobile Site Director David Trent and Senior Dir. of Civic Engagement Michon Trent; Top Right - Artists Michael Olzweski, Monica J. Beasley, Stephen Althouse, and Jane Cassidy; Bottom Middle - MMofA Director Deborah Velders with SOUTHERN MASTERS sponsor Susan Houston and Museum supporter Lauren H. Lynn; Bottom Left - MMofA Sponsor of Stephen Althouse Exhibition, Dr. G. Douglas Hungerford and Chair of Museum Collections Committee, Sarah Teague



VOLUNTEERS

Volunteers are at the forefront of helping Mobile Museum of Art fulfill its mission to educate, enrich, and engage through the arts. Through hands-on service, volunteers fill many essential roles for dozens of programs and community activities while simultaneously developing their personal interest in the arts. Some of the Museum's most important public programs, such as Art Blast! Summer Art Camp, Home School Art School, Spring Break Art Camp, school and walk-in tours, as well as outreach events, are significantly enhanced by the generous dedication of time and service from our valued volunteers.



Lexie Barnett
 Elaine Blount
 Tiffany Dotson
 Carolyn Douglas
 Sue Goodspeed
 Nancy Grabfelder
 Cat Grizzle
 Chuck Kondis
 Crissy Lambert
 Martha LoCicero

Fran Marshall
 Ron McConnell
 Lyn McDonald
 Theresa Orrell
 Scott Rumpf
 Myrna Salaun
 Joana Saavedra
 Mary Jane Sisson
 Nancy Spafford
 Melanie Stommel

Matilde Tellaetxe
 Marianne Testen
 Betty Vella
 Carol Wiggins
 Elaine Williams
 Faith Williams
 Lauren Williams
 Jerry Wilson
 Lin Wilson
 Alla Zakharova

INTERNS

Anna Egeland
 Mary Franklin King



BOARD OF DIRECTORS 2018

CHAIRMAN

Mrs. Sheri Weber

Mrs. Walsh Arendall

Mrs. Nancy A. Barry

Mrs. Bonnie Bates

TREASURER

Mr. G. Tim Gaston

Mr. Stephen L. Carter

Mrs. Diane Frank

Mrs. Julie Friedman

ASSISTANT TREASURER

Mr. Cory S. Adair

Dr. G. Douglas Hungerford

Mrs. Yuko T. Jordan

Mr. John Peter Crook McCall

SECRETARY

Mr. Norman Stockman

Dr. W. Allen Oaks

Mr. Frank Grey Redditt, Jr.

Mr. Ty Smithweck

IMMEDIATE PAST CHAIRMAN

Mr. F. Michael Johnson

Dr. R. Demetrius Steele

Mrs. Ann Marie Kilpatrick Terry

IMMEDIATE PAST VICE CHAIRMAN

Dr. Martha LoCicero

STAFF

DIRECTOR

Deborah Velders

CURATORIAL: COLLECTIONS & EXHIBITIONS

Melissa Mutert Assistant Director
Kurtis Thomas Manager of Curatorial Affairs
Stan Hackney Curator of Contemporary Art
Donan Klooz Curator of Exhibitions
Jeff Reinsmith Exhibitions Technician
Nichole Reineke Exhibitions Technician
Rachel Young Registrar

FINANCE AND ADMIN

Lianne Kenney Director of Finance and Admin
Marcy McKee Finance Assistant
Jamie Labeaud Finance Assistant
John Goodroe Grants Developer

EDUCATION

Angie King Curator of Adult Education
Elizabet Elliott Curator of Programs
Kim Wood Curator of Education, Curriculum
Sara Lee Volunteer Coordinator
Theresa Orrell Volunteer Coordinator

PUBLIC RELATIONS

Glenn Robertson Public Relations Manager
Meredith Ivy Special Events Manager
Mary Beth Lursen Media Marketing Specialist

THE MUSEUM STORE & VISITOR SERVICES

Geri Mitchell Visitor Services Assistant
Mittie Wingfield Visitor Services Assistant/Tours
Delores Young Visitor Services Assistant
Janet Wells Store Sales
Lacey Cooke Store Sales
Bree Horton Store Sales

FACILITY

Louis Pope Maintenance Mechanic
Norris Turner Custodian
Cedrick Hubbard Custodian/Museum Guard
Betty Williams Custodian

SECURITY

Theresa Edwards Museum Guard Supervisor
Arthur Alexander Museum Guard
Richard Allen Museum Guard
Danny Goodwin Museum Guard
Harriett Horn Museum Guard
Kercheval King Museum Guard
Jerica Poellnitz Museum Guard
Ulric Riley Museum Guard
Donna Robinson Museum Guard
Eulaunda Watters Museum Guard
Alan Weiss Museum Guard





DONOR CIRCLE

DIRECTOR

Mr. and Mrs. Lowell Friedman

BENEFACTOR

Mrs. Lee Hoffman

Dr. G. Douglas Hungerford

Drs. Joseph and Martha LoCicero

Dr. and Mrs. Charles Rodning

Mrs. Ann Marie Terry

William Taube Trust

PATRON

Mr. and Mrs. Cory Adair

Mr. and Mrs. Henry and Louise Cate Jr.

Mr. and Mrs. Richard Frank Jr.

Mrs. Barbara Ann Guthans

Ms. Ann Hearin

Mr. and Mrs. Jeff Jeffery

Mr. and Mrs. Victor Lott Jr.

Ms. Esteen McHugh

Mr. and Mrs. Peter Meredith

Dr. and Mrs. Thomas Myers

Mr. and Mrs. Derek Norman

Dr. and Mrs. W. Allen Oaks

Mr. and Mrs. Harold Parkman

Poarch Band of Creek Indians

Dr. Charles Rich & Ms. Susanne Carney

Rouses Markets

Mrs. Anna Swider

Mr. Franklin Trimm & Mr. Robert Koch

Mr. and Mrs. Steven Varnes

Ms. Erin Wheeler

SUPPORTER

Mr. and Mrs. James Atchison

Mr. and Mrs. John Baehr

Barry L. Booth, DMD Family Fund

Mr. John Cleverdon

Mr. and Mrs. David Cooper Sr.

Mrs. Suzanne Damrich

Dr. and Mrs. Jack DiPalma

Dr. and Mrs. Kenneth Ellingwood

Dr. and Mrs. Philip Forbus

Dr. and Mrs. J. Russell Goodloe Jr.

Ms. Ansley Green

Mr. and Mrs. S. Greer

Mr. and Mrs. Winston Groom

Mr. and Mrs. Nicholas Holmes III

Mr. and Mrs. F. Michael Johnson

Mr. and Mrs. Greg Jones

Mrs. Iris Klein

Mrs. Rosalie Lockhart & Ms. Francine Perganits

Dr. and Mrs. Paul Maertens

Mrs. Shirley McKinney

Mr. and Mrs. Ben and Maxine McMillan

Mostellar & Shreve, LLP

Mr. Ward Paul & Mr. Charles Schoenknecht

Mr. and Mrs. F. Grey Redditt

Mr. Michael Smith

Mr. and Mrs. Donald Smith Jr.

Mr. and Mrs. Norman Stockman

Ms. Evelyn Taylor

Mr. and Mrs. Jay Weber

ASSOCIATE

Mr. and Mrs. Joseph Babington

Dr. and Mrs. William Barrick

Ms. Joanne Brandt

Mr. and Mrs. Milton Brown

Mr. and Mrs. Edward Brown Jr.

Drs. Philip J. and Roberta Butera

Dr. and Mrs. William Case

Dr. and Mrs. Lanier Cauley

Mr. Jimmie Duet

Mrs. Elizabeth Eastman

Mr. Stanley Ellis

Mr. and Mrs. Tyrone Fenderson Jr.

Dr. and Mrs. Mark Foley

Dr. and Mrs. Frank Friedman

Mr. and Mrs. G. Tim Gaston

Mrs. Hilda Gewin

Ms. Ricia Hendrick

Mr. and Mrs. R. Hillyer

Mr. Michael Holberg

Mr. and Mrs. Lyman Holland Jr.

Mr. and Mrs. Clifton Inge

Mr. and Mrs. Jeff Jordan

Mr. and Mrs. Ben Jordan

Mr. and Mrs. Gilbert Laden

Larson & McGowin, Inc.

Dr. and Mrs. William Lightfoot

Ms. Janet Linton

Mrs. Laureen Lynn

Mrs. Ruth Macnamara

Mr. and Mrs. Bernard Malkove

Dr. and Mrs. Sven-Peter Mannsfeld

Mr. Thomas Mason

Mr. and Mrs. Thomas McGehee

Mr. and Mrs. Thomas McPherron

Mr. and Mrs. David Norris

Mr. and Mrs. William Orchard

Mrs. Dorothy Outlaw

Dr. James Pate

Mr. and Mrs. Peter Pischek

Mr. and Mrs. Robert Rouse

Ms. Kelly Samek

Dr. and Mrs. Alan Shain

Mrs. Mary Slaton

Mr. and Mrs. Thomas Van Antwerp Jr.

Dr. and Mrs. David G. Walsh

Mr. and Mrs. Michael Welhausen

Mrs. Barbara Whitaker

Mr. and Mrs. Jeral Williams

Ms. Mary Gale Woolford

FINANCIAL POSITION (audited)

September 30, 2019 and 2018

	<u>2019</u>	<u>2018</u>
ASSETS		
CURRENT ASSETS		
Cash	\$ 1,537,259	\$ 1,313,085
Accounts receivable	---	300
Grants receivable	18,450	18,900
Inventory	18,938	19,007
Prepaid expenses	<u>5,104</u>	<u>8,696</u>
TOTAL CURRENT ASSETS	1,586,751	1,359,988
PROPERTY, PLANT AND EQUIPMENT, net	699,689	767,497
EQUITY OF NET ASSETS OF FOUNDATION	257,780	253,822
REMAINDER INTEREST IN TRUST, present value	<u>196,627</u>	<u>188,430</u>
	<u>\$ 2,740,847</u>	<u>\$ 2,569,737</u>
LIABILITIES AND NET ASSETS		
CURRENT LIABILITIES		
Accounts payable	\$ 3,496	\$ 27,162
Accrued interest payable	---	---
Accrued payroll liabilities	4,234	4,239
Deferred revenue	5,284	4,465
Note payable	<u>\$ ---</u>	<u>\$ ---</u>
TOTAL CURRENT LIABILITIES	97,992	35,866
NET ASSETS	2,390,908	
Unrestricted	<u>339,113</u>	2,164,120
Temporarily restricted		<u>369,751</u>
	<u>2,730,021</u>	<u>2,533,871</u>
	<u>\$ 2,740,847</u>	<u>\$ 2,569,737</u>

HOW ARE WE DOING?

BY THE NUMBERS

26,535

onsite visitors

1,059,821

offsite visitors

600,000 - Airport
414,422 - Pop-Up Museum
8,500 - Mayor's Office
7,539 - Bellingrath Gardens
29,360 - Botanical Gardens

97,386

unique web visitors

250,075 unique visits
3,946,538 hits



8,848

Facebook fans



3,133

Instagram followers



2,424

Twitter followers

28

programs

2,348 attendees
137 participating artists

51

gifts to the collection



THE MUSEUM SCHOOL

1,195

adult class participants
in 34 classes

805

homeschool

979

adult tour participants

483

outreach

3,163

youth tour participants

182

Spring Break Art Camp

108

volunteers

3,337

Art Blast! Summer Art Camp

43 volunteers & docents
43 Summer Art Camp counselors
20 members of the board
2 interns



WHY WE DO IT

MISSION

EDUCATE. ENGAGE. ENRICH: THROUGH THE ARTS

Mobile Museum of Art is proud to serve our community and thankful to all those who have helped further this mission. Looking forward to another year of growth!

